

Protecting Alaska's Wilderness...

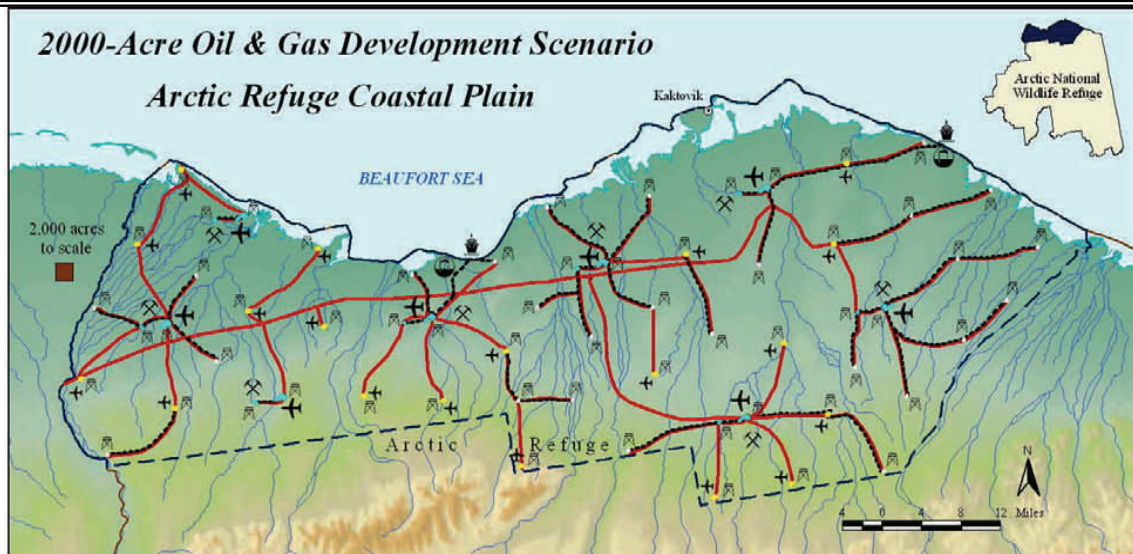
The ARCTIC TRUTH



September 9, 2008

GOV. PALIN'S 2,000 ACRE FALSEHOOD

"When you talk about ANWR and the area that needs to be unlocked so that we can explore more and develop these billions of barrels of oil, it's a swath of land that's about 2,000 acres in size -- and that's out of a 20 million-acre plain that has been set aside. So 2,000 acres, that's like a postage stamp on a football field. It's about the foot-print-size of LAX." - Gov. Sarah Palin on CNBC's Closing Bell with Maria Bartiromo, 8/29/08



THE 1.5 MILLION ACRE TRUTH

- The entire 1.5 million-acre Refuge Coastal Plain would be open to leasing and drilling.
- There is no requirement that the "2,000 acres" be contiguous (it's not a compact square).
- Bills mandate the first lease sale be 100 times greater than the supposed limit to development.
- The 2,000-acre limitation does not include all oil industry infrastructure, facilities, or operations - including roads, pipelines (except negligible amount for support posts), gravel mines, seismic exploration trials, exploration and delineation wells, water reservoir excavations, water withdrawal sites and ice roads. (from oregonj's diary on DailyKos.com, 8/31/08)
- Drilling and supporting infrastructure would have to sprawl across the Coastal Plain.
- National Academy of Sciences said harm to wildlife extends well beyond the direct "footprint"
- and effects could last centuries.

To find out more about the 2,000-acre hoax visit: <http://www.shameonbigoil.org/wp-content/uploads/2008/08/2000acrehoax7-20-08.pdf>



122 C Street, NW Suite 240, Washington, DC 20001 202-544-5205 www.alaskawild.org
For more information contact Emilie Surrusco, Emilie@alaskawild.org